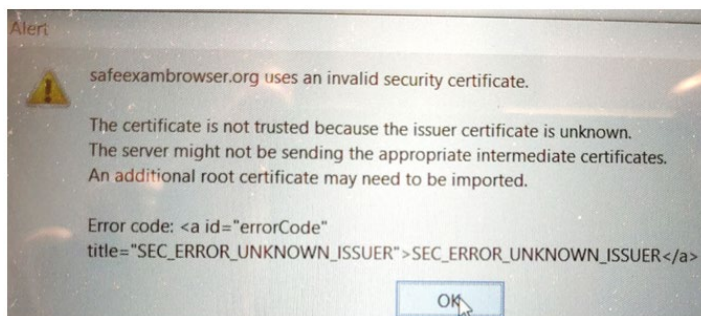


Important information on the use of the Safe Exam Browser (SEB)

- Download and install the latest version of the SEB for Microsoft or macOS here:
https://safeexambrowser.org/download_en.html
- External screens are not accepted by the SEB and must be disconnected from the laptop.
- Save and/or close all documents on the laptop before starting the exam with the SEB.
- Not all antivirus programmes are accepted by the SEB (e.g., Bitdefender). If the following message appears, check the list of supported antivirus programmes at
https://www.safeexambrowser.org/faq/faq_en.html

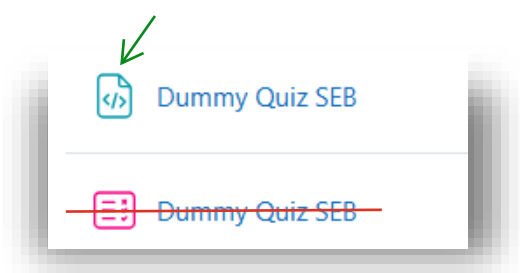


Starting the Quiz

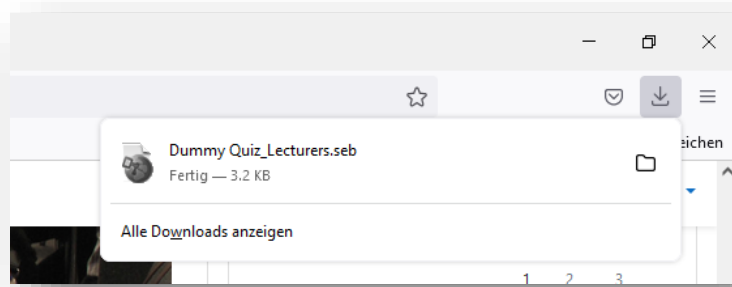
Now do the exam with the SEB. In case of difficulties or error messages, contact the lecturer or take a photo with your phone (screenshot is not possible) if you are taking the test at home.

Please note: From the third step onwards, all files and programmes are closed automatically. Memorise these instructions or open them on a second device.

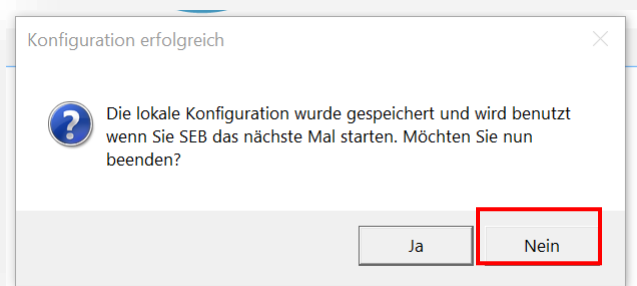
1. Click on the exam:



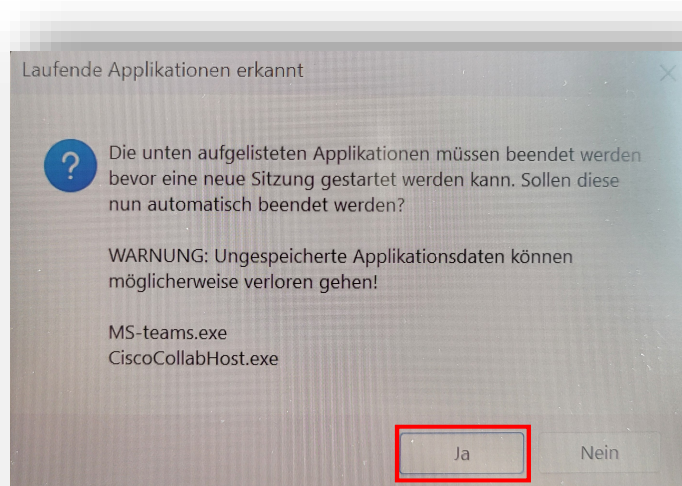
2. Open the file via the downloads of the browser:



3. Click "no" on the first notification:

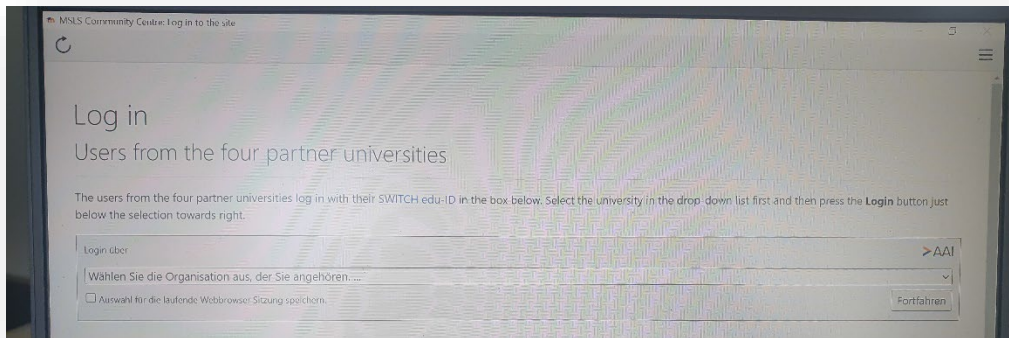


4. Click "yes" on the second notification (only appears if you still have open files or programmes):

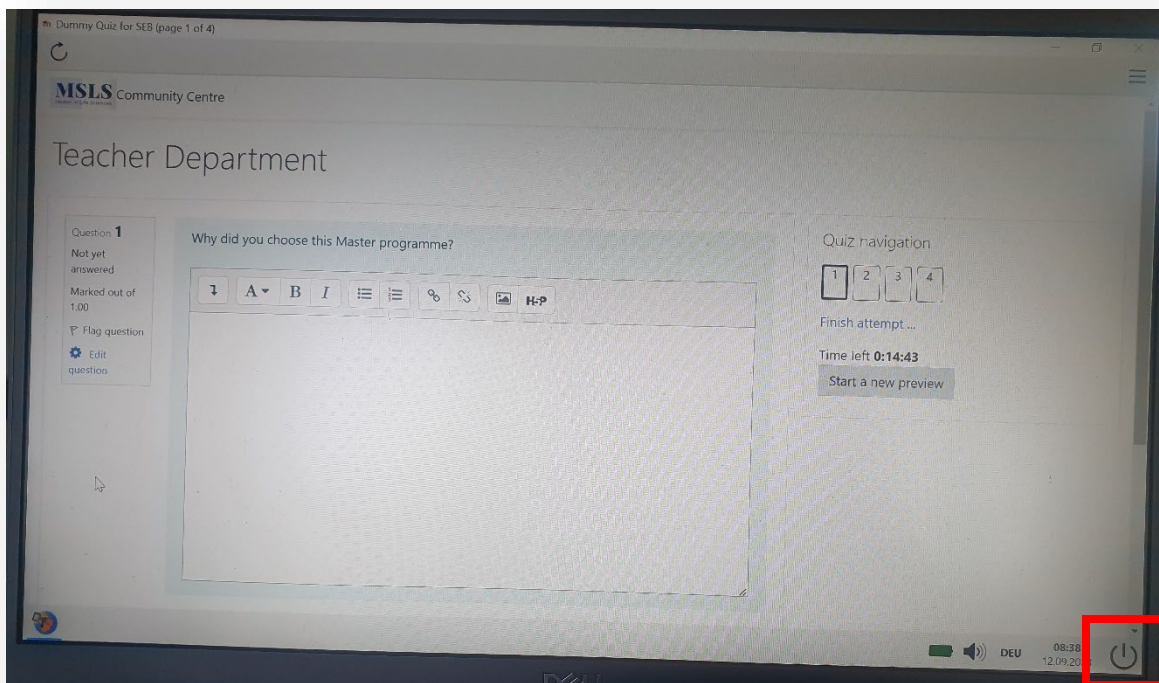


5. Log in to the MSLS Community Centre as usual:

Please note: the two-factor identification occurs every time in a SEB exam. Therefore, take your mobile phone with you to the real exam!



6. Now do the quiz. The structure is the same as for a "normal" Moodle quiz. You can end the SEB at any time by clicking on the icon at the bottom right.



In case of difficulties or error messages, contact the lecturer or take a photo with your phone (screenshot is not possible) if you are taking the test at home